



Pastoral Care Policy

Incorporating information on:

Personal Development and Mutual Understanding
Misuse of Substances/Drugs Education
Relationships and Sexuality Education
Anti-Bullying Procedures
Positive Behaviour Strategies

Policy reviewed by all staff and governors – April 2010

FOREWORD

This document outlines Orchard County Primary School's approach to a range of Pastoral Care issues. Its main function is to provide ethical direction and practical guidance for all those employed within our school and those external agencies working with young people within the school environment.

The four sections are outlined as follows:

Section A Pastoral Care This section should be viewed as an umbrella document outlining our school's ethos and the emphasis we place on the growth and development of our pupils.

Section B Personal Development and Mutual Understanding. This section provides guidelines on the delivery of the PDMU taught curriculum in line with the revised NI Curriculum.

Sections C Misuse of Substances and Drugs Education outlines our approaches to drugs education and responses to drug related incidents.

Section D Relationships and Sexuality Education provides guidelines on the incorporation of a RSE programme within the schools personal development education policy and our approach to a range of sensitive issues relating to RSE.

Section E Anti-Bullying Procedures provides information on the procedures applied when a member of staff, a child or a parent has concerns that a child is bullying or being bullied.

Section F Positive Behaviour Strategies outlines the methods used to encourage consistently positive behaviour within Orchard County Primary School.

This document should be used in conjunction with a range of other school policies and guidelines including:

- Child Protection
- Behaviour Management
- First Aid
- Health & Safety
- Storage and Administration of Medication

Whilst Individual sections of this document will be salient depending on a given situation, it is essential to note that Orchard County's commitment and holistic approach to the personal development of each pupil is the lynchpin connecting all sections.

Contents

	Page	
Glossary	4	
Introduction	4 - 5	
Pastoral Care Policy	6 - 7	
Personal Development and Mutual Understanding Guidance	8 - 9	
Misuse of Drugs/Substance Policy for Schools	10 - 12	
Relationships and Sexuality (RSE) Policy	13 – 15	
Anti-Bullying Procedures	16 - 17	
Appendices		
Appendix 1	Service Level Agreement for Use with External Agencies Working in Schools	18
Appendix 2	Checklist for use of Schools Safeguarding Team to vet External Agencies working in schools	19
Appendix 3	Misuse of Substance Flowchart	20
Appendix 4	Drugs and Substance Misuse Incident Report Form (Form to be completed by Teacher involved in Incident)	21
Appendix 5	School Record and Checklist (To be completed and filed by Principal / Designated Teacher)	22
Appendix 6	Pro Forma to inform SELB / Employing Authority of Incidents	23
Reference Materials		24

GLOSSARY

- **Young People** - Any young person/pupil/child who is attending Orchard County or participating in activities exclusively run by our school.
- **Personal Development** as used throughout this document encompasses the terms Personal, Social and Health Education (PSHE), Personal Social Development (PSD) and Life Skills.
- **Guidance and Counselling Skills** - those skills developed by teachers through the person-centred approach to supporting young people.
- **Counsellor** - an appropriately qualified individual who adheres to the BAC guidelines, particularly in relation to supervision.
- For the purpose of this document, **substance misuse** is any drug, including alcohol, which, when taken, has the effect of altering the way the body works or the way a person behaves, feels, sees or thinks. This includes alcohol, tobacco, “over the counter” and prescribed medication, volatile substances and controlled drugs.

INTRODUCTION

Pastoral Care is not a frill or option; it is the oxygen essential for the learning process to occur.

McGuinness (1989)

Parents are the primary educators of young people. The responsibility and impact of the home environment in the formative years is acknowledged as the most important influence on the development of all adults.

However, there are numerous other influences which come from a wide range of other sources. Central to these influences is the role of schools, and more specifically teachers, who will have contact on a daily basis with children and young people from 4 to 18 years of age. It is paramount that those charged with the responsibility of educating young people must be aware of the crucial importance of their role. This document will provide the support that teachers within the Orchard County need to give direction to their work with young people.

To develop as a person is to develop in all five dimensions of life – physically, intellectually, emotionally, socially and spiritually. However, it is widely recognised that our educational system to date has tended to neglect both the emotional and spiritual dimensions of our lives. In recognition of this we must adopt a proactive stance in taking a holistic approach to the development of our young people. This personal development approach is in keeping with the CCEA proposals for the revised curriculum.

Personal Development provides the means for our young people to clarify their values and attitudes. It assists young people in the development of personal skills which in turn leads them to an acceptance of responsibility for themselves and for their actions. Personal Development must be firmly rooted in the belief that all people have value in their own right, and that their feelings, opinions and actions are important, regardless if these correlate with those of others or not. In practice this means that we as teachers endeavour to communicate openly and honestly with our pupils and enter into genuine sharing relationships. Most significantly, it means that we must place confidence and trust in the ability of others to take responsibility for themselves, their behaviour, their feelings, their attitudes and their learning. We must provide and allow for the development and awareness of self, and all that this entails.

When individuals come in contact with, own, and accept their inner strength, a new way of living emerges for them. Pastoral Care provides the conditions in which the constructive power within can be released and used to its fullest advantage.

The mutually beneficial outcomes of developing an honest approach to Personal Development through Pastoral Care are:

- increased self awareness
- development of high internal self-esteem
- confidence and independence of thought
- sensitivity to the needs of others

In addition, young people especially develop the necessary skills to cope with possible risks to their personal safety from a range of threats. They become empowered to meet the demands and challenges of adult and working life with confidence.

Having accepted this approach in its entirety the objective of this document is to:

- give specific guidance to Orchard County on Pastoral Issues
- highlight current legislation on the care and health of young people
- support the ongoing implementation of the revised NI Curriculum
- encourage continuous monitoring and evaluation of the effectiveness of provision in the area of Pastoral Care
- provide guidance on the handling of specific Pastoral issues including Substance Misuse/Drugs Education and Relationships and Sexuality Education
- promote the value of a proactive, rather than a reactive, approach to Pastoral issues.

Rationale

We define Pastoral Care as the created ethos through which our pupils develop and learn to their optimum potential. We provide the opportunity for **every** pupil to develop into responsible, self-aware, confident, and capable young people equipped to cope with the challenges of the 21st century.

Orchard County accepts that Pastoral Care must form the basis of, and permeate, all aspects of the curriculum.

Vision and Values

Our school subscribes to the view that every pupil has a right to feel safe and secure on all levels. We will actively promote a Pastoral Care ethos which allows for the development of the whole person, and which leads to **every** pupil making good choices which will form the basis for a healthy and positive lifestyle.

Pastoral Care will be the setting where our young people will acquire values and standards on the basis of observing these at work at every level.

It is also important to remember that schools are centres of *education* and we therefore accept the validity of a personal development approach rather than a delivery which is service driven.

Ethos

Ethos is an intangible concept with a tangible effect. It is our intention to establish a strong Christian ethos which may be detected in the feelings of security at every level within our school.

This may be achieved through:

- creating a sense of belonging amongst all strands of our school community
- developing an atmosphere of mutual respect and caring
- creating an explicit Pastoral Care programme which allows for a fair and equitable exchange of views/ideas/attitudes, etc. in an atmosphere of care and trust
- implementation of a Behaviour Management policy which creates a full sense of justice and fair play amongst our school community
- providing opportunities for **every** person to succeed and to be affirmed in their self-worth
- promoting positive relationships at every level
- working with parents for the mutual benefit of all
- establishing and maintaining links with the wider community
- affirming and actively promoting staff to develop positive attitudes towards themselves and to the pupils in our care
- creating a sense of self-worth at every level

Relationships

Excellent relationships foster and develop in an atmosphere of ***Respect***.

Our school will work towards creating opportunities where mutual respect can grow and develop. We aim to create a caring, empathetic and secure environment where our young people can develop good relationships based on those they experience.

Professional Counselling

The value of professional counselling should never be underestimated. A counsellor can offer immense support to a young pupil who needs help and guidance. Orchard County will endeavour to enlist the support of Professional Counsellors to assist our young people to develop towards a more concise and definitive awareness of self.

All counsellors who assist in this extremely important area will be familiar with relevant guidelines.

Counselling/Relationships

Teachers will endeavour to build effective, empathetic relationships with our pupils in order to provide advice and support whenever necessary. However we retain awareness of the need for other avenues of support.

Managing External Agencies (Ref Appendix 1 and 2)

We acknowledge the importance of ensuring that any external agencies used to support our work with young people must adhere to the values and ethos particular to our school. Orchard County staff are aware of the importance of a contract being agreed upon by all contributory parties.

Training and Support

In order to support staff our school recognizes the importance of training as a priority area in the establishment of a caring and pastoral environment.

Related School Policies

This policy is set within the broader school context of Pastoral Care and as such should be read in conjunction with the following school policies:

- Personal Development Curriculum Policy
- Child Protection Policy
- Misuse of Drugs/Substances Policy
- Behaviour Management Policy
- First Aid Policy
- Storage and Administration of Medication policy

Evaluation and Monitoring

Orchard County staff recognises and accepts the importance of monitoring and evaluating all aspects of Pastoral Care at every level. To this end we follow the procedures for self evaluation as outlined in the DE document 'Together Towards improvement'

Rationale

Orchard County Primary School recognises that young people live in a period of rapid and often dramatic social, economic and technological change. In this climate our young people should ideally develop intra-personally and inter-personally through the role models of significant adults in their lives. As a result, they will automatically become more emotionally intelligent and witness the importance of having the right values and practices in the employment of life skills. However, in the absence of this, a taught curriculum is required in which teachers will act as facilitators providing young people with the knowledge and opportunity to practice vital life skills.

Aims

In line with our Christian ethos and values it is our view that the personal development of our pupils is as important as their academic development. We believe that the holistic approach to development on all levels produces well rounded “whole” people equipped with the skills to deal with life. In recognition of this, when delivering the personal development programmes, we focus on the development of skills and values centred firmly on the person.

In addition we recognise that this school is a centre of education and therefore they must accept the validity of a personal development approach to the delivery of the curriculum rather than a service driven direction.

Objectives

Through the delivery of the Personal Development and Mutual Understanding (PDMU) programme our young people should be able to:

1. develop skills, attitudes, values and abilities which will enable them to be effective in a variety of adult situations and occupations
2. develop knowledge and understanding of themselves and others as individuals – their strengths and limitations, abilities, skills, personal qualities, potential, needs, attitudes and values
3. develop independence of mind and take responsibility for their own decisions and actions
4. develop self-reliance, self-discipline, self-respect and self-esteem
5. adopt an enterprising and persistent approach to tasks and challenges
6. develop a respect for ways of life, opinions and ideas different from their own, provided these are based on consideration and respect for others
7. develop a concern for, and a readiness to act on behalf of, the legitimate interests of others who cannot effectively so act themselves
8. develop knowledge and understanding of the world in which they live and of employment and other opportunities that are available
9. gain a concern for conservation of the natural world and for the physical, including the built environment
10. become effective independent learners

Methodology

- In recognition of the fact that we all learn in different ways a range of learning styles and teaching strategies will be employed related to active/experiential learning. These approaches will emphasise group and collaborative strategies, maximising opportunities for pupil input, decision-making and problem-solving.
- Lessons will be conducted in a non-judgemental atmosphere with the teacher in the role of the facilitator, creating and maintaining a safe and secure environment. Empathetic relationships based on mutual respect will be developed to create a place where fears and concerns can be expressed openly without risk of ridicule or reproach.
- The delivery of lessons will be concerned with the systematic and purposeful development of the whole person with emphasis on the active involvement of pupils in the learning process.
- In line with our commitment to giving PDMU equal status with other subjects, each pupil will have access to a minimum of one hour per week of specific timetabled PDMU.

Managing External Agencies

We acknowledge the importance of ensuring that any external agencies used to support our delivery of PDMU must adhere to the values and ethos particular to Orchard County. We are also aware of the importance of a contract being agreed upon by all contributory parties.

Monitoring and Evaluation (Ref Appendix 1 and 2)

This school recognises and accepts the importance of monitoring and evaluating all aspects of the delivery of the PDMU curriculum. To this end we follow the procedures for self evaluation as outlined in the DENI document, 'Together Towards improvement'.

Related school policies

This policy is also set within the broader school context of Pastoral Care and as such should be read in conjunction with the following school policies:

- Pastoral Care Policy
- Relationships and Sexuality Policy
- Child Protection Policy
- Misuse of Drugs/Substances Policy
- Behaviour Management Policy



Misuse of Substances / Drugs Education Policy

Rationale

In today's society many young people are exposed to glamorous and unrealistic messages in relation to drugs and their effects. Combined with ineffective Government policies, this often leads to misuse and abuse by impressionable and vulnerable young people. Whilst we recognise that parents are the primary educators of their children, we realise that our school is well placed to provide strong support and care in the area of substance misuse. As such we encourage all pupils to develop personal and social skills that will enable them to make informed decisions regarding substance misuse. We recognise that an asserted approach for supporting young people in substance education is to create an ethos within the school which promotes individual empowerment, and values, such as tolerance, openness, honesty, respect and caring for ones self and others.

Aims

- To establish abstinence/prevention as the main approach to substance misuse.
- To establish an environment free from the misuse of all substances.
- To provide guidance on the protocols to be used in suspected or real substance misuse.

Objectives

- To provide factual information and knowledge about drugs/substances.
- To establish and develop personal, social and moral skills that will enable a young person to make positive, informed decisions.

The two are intertwined and mutually supportive.

Legal Legislation

It is the policy of this school to comply with the legal requirements laid down in The Misuse of Drugs Act (1971) and other relevant legislation.

In keeping with requirements we will publish relevant sections of our Misuse of Substances/Drugs Education Policy in our school prospectus. A copy of the policy may also be obtained from the school.

Whole School Approach

It is the view of this school that education surrounding drugs/substance misuse should not be taught in isolation, but rather as an integral part of our Personal Development Programme. This involves developing a set of values and skills that will aid in producing rounded 'whole' pupils - physically, intellectually, emotionally and spiritually. The aims stated above are fulfilled through pupils' experiences in the taught curriculum, the informal curriculum and through opportunities in extra-curricular activities.

Roles and Responsibilities

A response to a substance-related issue is not just the responsibility of teaching staff within this school. We use a multidisciplinary approach to deal with all issues relating to drugs/substance misuse. Included are:

- Board of Governors

- Designated Drugs Officer
- Personal Development Curriculum Co-ordinator
- Safeguarding Team
- All Members of Staff
- External Agencies

**Responding to Misuse of Substances and Related Incidents
(Ref Appendix 3, 4, 5 and 6)**

In the unlikely event of an incident occurring we will follow the practices and procedures stated in the Misuse of Substance Flowchart (**See Appendix 1**) In addition, parents/guardians will be immediately notified as will the Board of Governors and the CSIO PSNI Officer in order that investigations into the source of, and possible trafficking in, illegal substances can be expedited.

Our policy in these matters is to proceed with the utmost discretion and sensitivity bearing in mind the need to protect the rights of the pupil concerned, their families and our school. However, it will be made clear to our pupils that no guarantee of confidentiality can be offered if he/she discloses to an employee that he/she is taking drugs. Due to the seriousness of substance misuse, any incidences/knowledge must be reported to the Safeguarding Team who will ensure that proper action is taken to protect that pupil.

Procedures to be followed:

Pupil under Influence - ensure immediate safety of pupil and others, and administer first aid if and when necessary. The Safeguarding Team should then be informed, followed by parents. At this stage both the PSNI and the SELB should be informed.

Pupil Suspected/Known to be in Possession of a Substance - pupil will be asked to surrender the substance whereupon it will be placed under lock and key until collected by the PSNI. Upon refusal to comply, the pupil will be escorted to the Principal who will make a further request. Upon refusal by the pupil to accompany a responsible adult to the Principal, the Principal will be sent for while the adult remains in close proximity to the pupil.

Pupil Dealing - Safeguarding Team should be informed immediately whereupon the PSNI and SELB will be contacted.

Media

The Principal will take responsibility for liaison with the media.

Recording and Referral

Appendix 4, 5 and 6 will be used to record and refer information to both the SELB and where employing authority.

Managing External Agencies (Ref Appendix 1 and 2)

We acknowledge the importance of ensuring that any external agencies used to support our work with young people must adhere to the values and ethos particular to our school. The Orchard County staff are aware of the importance of a contract being agreed upon by all contributory parties.

Safety in the School

The school has several qualified First Aiders who are known to all staff and are easily accessible.

All substances and associated paraphernalia will be collected, stored under lock and key and delivered to the PSNI.

Policies and procedures are in place to communicate with parents regarding the safe storage and administration of prescribed and over-the-counter medication during school hours.

Staff Development

We regularly update and train our staff regarding issues surrounding drugs/substance misuse.

Related school policies

This policy is also set within the broader school context of Pastoral Care and as such should be read in conjunction with the following school policies:

- Pastoral Care Policy
- Personal Development and Mutual Understanding Policy
- Child Protection Policy
- Behaviour Management Policy
- First Aid Policy
- Storage and Administration of Medication policy

Monitoring, Reviewing and Evaluating

Periodic review of our Drugs/Substance Misuse Policy will take place to reflect changing circumstances and trends. Evaluation will cover two areas:

- The effectiveness of the policy to assist pupils in resisting the lure of substance misuse.
- The effectiveness of the procedures and practices in place to deal with substance related incidents.

To this end we follow the procedures for self evaluation as outlined in the DE document 'Together Towards improvement'

RELATIONSHIPS AND SEXUALITY EDUCATION POLICY

Rationale

Orchard County Primary School firmly advocates the Personal Development approach where young people are given the skills to help them resist peer and media pressure, and make informed decisions based on their own internal self respect and self esteem. The staff recognises that this school is a centre of education and therefore accept the validity of the personal development approach rather than a service driven delivery.

Aim

Relationships and sexuality is a major issue for our young people. There has been a disturbing rise in young people's sexual activity and the numbers of underage pregnancies as well as STIs, partly as a result of glamorous and contradictory messages from the media. Men and women are promoted as sexual objects and engaging in sexual activity appears to carry no responsibility or consequence. No consideration is given to the complex set of emotions and interactions required to sustain a healthy loving relationship.

In conjunction with our Christian ethos, this policy is intended to provide a framework through which our pupils can develop the skills, attitudes and values necessary to deal with the challenges which they will meet in this very sensitive area.

Objectives

Through the delivery of RSE our young people should be able to:

- form Christian values and establish behaviour within a moral, spiritual and social framework
- examine and explore the various relationships in their personal lives
- learn how to develop and enjoy personal relationships and friendships which are based on responsibility and mutual respect
- lay foundations for developing more personal relationships in later life
- make positive, responsible choices about themselves, others and the way they live their lives

Outcomes

Desired outcomes are:

- enhanced self-awareness and self-esteem
- healthy and respectful friendships and relationships
- an understanding of and a healthy attitude to human sexuality and relationships in a moral, social and spiritual framework
- responsible behaviour and the ability to make informed decisions
- a sense of value for family life and marriage
- an appreciation of the responsibilities of parenthood
- appreciation of the value of human life and the wonder of birth

Responding to sensitive issues

We recognise that, on occasion, certain sensitive issues may require consideration. When attempting to deal with these issues the following procedures will be adopted:

- **Pregnancy**

In the extremely unlikely event, we would support any pupil who may become pregnant whilst enrolled at our school. Following consultation and agreement with the young mother to be, referral may be made to the SELB's SAM (School Age Mothers) Project.

In the event of a pupil informing the school that she is pregnant we will consider if child protection is an issue. Advice will initially be sought from the school's safeguarding team and if it is deemed necessary the school will follow its child protection guidelines.

- **'Risky' Children**

This term has been applied to children who display behaviours that may be harmful to other children. Whilst these children have a right to education the school has an obligation to ensure the well being of the entire school population. In order to do so we will carry out a risk assessment.

- **Sexual Identity and Sexual Orientation**

We are aware that as young people are growing up they can experience sexual identity and orientation confusion. In line with our Christian ethos, it is vitally important that all curricular delivery advocates abstinence as the acceptable option for all young people. Bullying on the grounds of sexual orientation, is as unacceptable as it is in any other situation where someone is mistreated or bullied because of their differences from those who are perceived to be the majority. All issues relating to bullying on the grounds of sexual orientation will be dealt with appropriately in line with the general school anti - bullying policy.

- **Child Protection**

If, for any reason, a young person is deemed to be at risk, then he/she will be informed that confidentiality must be breached, and the reasons for the breach. The young person will also be reassured that he/she will be supported throughout the process.

- **Role of Parents** – The school will never attempt to assume the cloak of parental responsibility. Rather, we view parents as having prime decision making responsibilities. It is paramount that we work in partnership with parents, particularly in relation to these sensitive issues and that will always be our aim.

- **Recording and Referral** – Clear and concise records will be kept pertaining to all issues outlined above.

Parental Partnership

We recognise that parents have the prime responsibility for bringing up their children and we will therefore seek to ensure that our RSE programme complements and is supportive of the parents' role.

Related school policies

As with all Pastoral related policies, this policy is set within the broader school context of Pastoral Care and as such should be read in conjunction with the following school policies:

- Pastoral Care Policy
- Personal Development and Mutual Understanding Policy
- Child Protection Policy
- Misuse of Substances/Drugs Education Policy

- Behaviour Management Policy
- Anti-Bullying Policy
- First Aid Policy
- Storage and Administration of Medication policy

Managing External Agencies (Appendices 1 and 2)

Orchard County Primary School acknowledges the importance of ensuring that any external agencies used to support our delivery of Personal Development must adhere to the values and ethos particular to our school. We ensure contracts are drawn up to inform all contributory parties

Monitoring and Evaluation

This school recognises and accepts the importance of on-going monitoring and evaluation of all aspects of the RSE programme.

To this end we follow the procedures for self evaluation as outlined in the DE document 'Together Towards improvement'

Rationale

Orchard County Primary School believes that bullying is everyone's business and that a whole school approach is required to highlight and eliminate bullying in our school and that this approach is well publicised, effective and consistent in forms of response. The school's Anti-Bullying Policy is an integral part of our Pastoral Care and Child Protection Policies.

What do we as a school understand the term bullying to mean?

We say a child is being bullied when he or she feels threatened or intimidated through the fear of real or imaginary actions or force being implemented against them, their peers or their family.

Aims

- To create an environment where everyone associated with the school feels a sense of involvement and ownership
- To establish a shared understanding of what bullying is
- To strive to prevent bullying in the school through early intervention and agreed action
- To let children contribute to the school's rules for behaviour
- To encourage children to talk about and report incidents of bullying

Strategies we use to discourage bullying

- To place an emphasis on friendships, avoidance strategies and assertiveness training
- Encourage victims and witnesses to bullying to speak out
- Anti-bullying focused in PDMU lessons and curricular links
- Introduce through themes assemblies
- Introduce an Anti-bullying awareness week/competition
- Include circle time and drama sessions in every class to:
 - Allow children to discuss their feelings in a non-threatening situation
 - Conflict/resolution situations – in seeing others points of view
 - Deal with feeling specific to anger, frustration and fear
 - Examine problems and solutions, through group conferencing – Restorative Justice Model
- Encourage the bully to talk freely about his/her behaviour in the context of change
- Support the bully as they analysis their behaviour and endeavour to change
- Ask pupils to act as observers in the class, playground, dining hall, cloakroom, toilets and when away on school trips and report all incidents of bullying
- Place an important emphasis on welcoming new pupils and visitors to the school
- Develop class rules against bullying
- Develop and encourage pupils to examine their own self-protection strategies

Implementation of the Policy

- Use of school ethos to raise self esteem
 - All pupils, victims and witnesses should report and talk about their concerns to the class teacher or teacher on duty
- Ancillary staff should report any incident that gives cause for concern to the class teacher or Principal
- Supervision will be such as to give as few opportunities as possible for bullying to take place
- Parents should inform the class teacher or Principal of their concerns about their child
- Teachers will keep a brief record of any incident reported and take the appropriate steps as outlined in the Child Protection Policy
- Bullying related incidents will be addressed in the curriculum
- All staff are responsible for the Pastoral care of each child

Staff In-Service Training

Each member of staff will receive general training on the Policy and Procedures. The Principal and Vice Principal will avail of courses offered by the SELB, RTU and other multi-disciplinary agencies.

All staff will be given appropriate training: Teachers at staff meetings and in-service training courses

Ancillary staff in meetings with the Principal and whole school staff meetings as appropriate in-service training courses.

The Principal will intervene in a bullying situation

- If the problem continues after the class teacher has addressed the problem
- If the bullying is initially severe
- At the request of the parent
- When it comes to the Principal's direct attention
- At the request of the teacher

Action to be taken when the school is aware of bullying

Inform the parents of the victim/s and the bully/bullies as soon as any allegation and/or incident comes to light.

- All pupils will be involved in the development of preventing and tackling bullying issues.
- The bully, victim and witnesses will be spoken to by the class teacher or Principal about the incident and all encouraged to think of the others feelings.
- Reporting of any further incidents will be stressed to the bully and victim as a 'must'
- Further bullying will result in appropriate sanctions.
- Where bullying persists or is of a serious nature, parents will be informed and appropriate action taken.
- Where it is considered that a pupil may require professional help beyond the expertise of the staff, the Principal, with the permission of the parent/guardian, will seek advise within the SELB and/or outside agencies ie counselling (ref Child Protection procedures).
- Record of incidents will be kept by the class teachers and in the Record of Incidents Register.
- Sanctions as set out in the school's Positive Behaviour Policy may be involved.

Monitoring and Evaluation

The Governors will seek the views of all staff, pupils and parents when carrying out a review of the policy and procedures. The policy will be given to each member of the Board of Governors, staff, parents and volunteers. It will also be available from the office for consultation purposes.

This policy will be reviewed annually or sooner as considered necessary to meet changes in school circumstances and/or SELB/DENI guidelines and/or new legislation.

REF Challenging Bullying Behaviour (Primary)
Education and Libraries (NI) Order 2003
DENI Circular 2003/13

Service Level Agreement for Use with External Agencies Working in Schools

I/We have read the school ethos and policies of _____ and agree to formally adhere to their ethos and policies:

- in working with young people and
- in the delivery of the programmes outlined below:

I/We am/are, willing to provide **full** details of material content to:

Senior Management, Teachers, Parents, Governors and other Appropriate Bodies

and agree to fully implement any changes deemed necessary by the above representatives.

I accept the right of the school to withdraw the invitation issued to support the school in the education of our Young people.

I/We formally accept the above terms of reference and in so doing I/We will acknowledge the agreement made.

Signed _____ (External Agency)

Dated _____

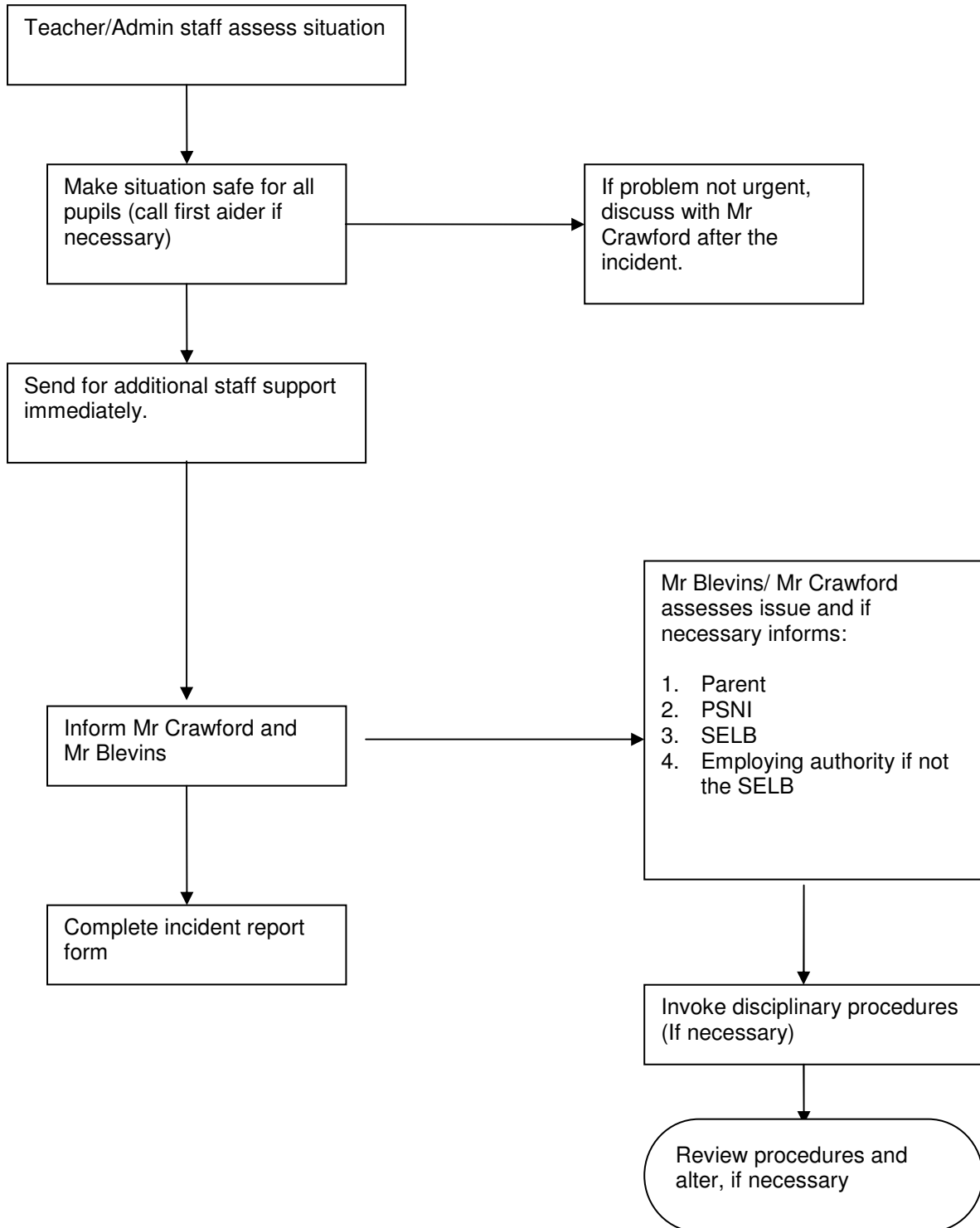
Countersigned: _____ (Principal/Board of Governors)

Dated _____

Checklist for use of Schools Designated Child Protection Officer to vet External Agencies working in schools

- Accredited Body
- Copy of Mission Statement
- Personnel to be used: PSNI Check
 - Official Qualification
 - Key Person
- All statutory requirements fulfilled: i.e. Health and Safety Policy, etc.
- Sufficient Insurance
- Principal Informed and Approval Granted
- School Ethos read and understood
- Service Agreement completed and signed
- Evidence of current legislation
- Established format for feedback
- Evaluation process in place

Misuse of Substance Flowchart



Drugs and Substance Misuse Incident Report Form (Form to be completed by Teacher involved in Incident)

Nature of Incident:

Date: _____ Time: _____ Venue: _____

Pupil(s) involved:

Teacher Response:

Substance given to Principal/Designated Teacher: Yes NO

Report to Designated Teacher: Yes NO

Report to Principal: Yes NO

Signed: _____ Date: _____

Appendix 5

School Record and Checklist

(To be completed and held as record by Principal / Designated Teacher)

Date: _____

Nature of Incident:

Substance in secure storage: _____ (please tick)

Staff involved:

Report from staff attached: _____ (please tick)

Name of Pupil(s) involved:

Year:

_____	_____
_____	_____
_____	_____
_____	_____

Informed (Circle as appropriate):

➤ Parent(s)/Guardian(s) :

➤ Local PSNI :

➤ Board of Governors :

➤ SELB :

➤ Employing Authority if not SELB :

➤ Other relevant bodies :

Action plan for pupil support in place:

Signed: _____

Principal/Designated Teacher

PRO FORMA TO INFORM SELB/EMPLOYING AUTHORITY

Name of School: _____

Address: _____

Telephone No: _____

Date: _____

Principal: _____

Contact Teacher: _____

Details of Incident:

Substance (if identified): _____

I have completed the checklist outlined in Appendix E:

Signed: _____

Date: _____

Reference Materials

Area Child Protection Committees' Regional Policy and Procedures
April 2005

Children (NI) Order 1995 'The Sexual Offences (Amendment) Bill 2000'¹

DE Circular 'Relationships and Sexuality Education (RSE)' 2001/15

DE Circular 'Drugs: Guidance for schools' 2004/9

DE Circular 'Pastoral Care in Schools' 1999/10

Drugs: Guidance for Schools in Northern Ireland
CCEA
2004 ISBN 1 85885 652 3

Evaluating Pastoral Care 1999
DENI
1999

Guidance for Primary Schools: Relationships and Sexuality Education
CCEA
2001 ISBN 1 85885 209 9

Guidance for Post Primary Schools: Relationships and Sexuality Education
CCEA
2001 ISBN 1 85885 209 9

Integrating Personal Safety Programmes into the Curriculum: Child Protection
CCEA
1999 ISBN 1 85885 202 1

Pastoral Care in Schools: Child Protection
DENI
1999

The Education and Libraries (NI) Order 2003

Together Towards Improvement: A Process for Self-Evaluation
Department of Education ETI

UN Convention on the Rights of the Child
Article 3; Article 12; Article 19