



Orchard County Nursery



Prospectus



Orchard County
Primary School

Core Values



MISSION STATEMENT

Orchard County Primary School will provide a caring, happy and safe environment, where each child will feel valued and be given the opportunity to reach their full potential. We aim to promote positive attitudes, behaviour and relationships between school, home and the community.





Orchard County Nursery



Dear Parents

Thank you for taking the time to read our prospectus. I hope you find it interesting and informative. Whether you have already enrolled your child or you are still considering which school best suits their needs I'd like to welcome you to Orchard County Primary School Nursery Unit.

Confidence in a school comes from knowing what goes on within and this prospectus aims to provide you with basic school information and hopefully answer some of the questions you will have about Orchard County, as a new or prospective parent. Please also visit our website to see more information: www.orchardcountyps.co.uk

Orchard County is the amalgamation of Annaghmore and Tullyroan Primary Schools so we have the best of both worlds - a staff which possesses many years experience in expert delivery of the NI primary curriculum and a modern building, having only been opened in September 2005. The nursery unit opened in September 2012.

The main building comprises of modern, well equipped classrooms, each with computers, iPads and interactive boards. The carefully landscaped grounds have extensive tarmac play areas and a large enclosed multi-use Games Area.

The school has a strong Christian ethos and our primary aim is to provide a caring and stimulating environment within which each child will be valued and nurtured in order to reach his or her full potential. We wish to promote in all our pupils such values as will make them caring and responsible citizens. We believe in the dignity and worth of each individual and in the development of the whole person.

To do this, we at Orchard County Primary School place

great value on the importance of the teamwork between pupils, parents, teachers and governors. We thoroughly believe that when working together we can provide the best possible educational opportunities.

The school communicates regularly with parents via text messages, newsletters, parent/teacher meetings, PTA meetings and various school-based activities. We also employ an 'open door' policy to ensure urgent parental queries are dealt with quickly and effectively by the most relevant member of staff.

Prior to starting school, all children receive an information pack and are invited to an induction session where more detailed information about starting school will be provided. Please do not hesitate to contact us if you would like to arrange a visit or require any further information.

Should you make the decision to enrol your child in Orchard County Primary School Nursery Unit, we look forward to sharing in his/her development in the years ahead.

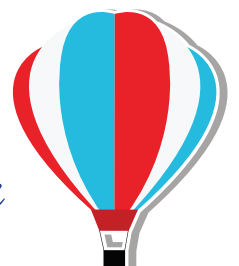
If you have not yet decided which school you'd like to enrol your child in, I trust you will find this prospectus helpful. I also trust that soon you too will see that although we have a beautiful new building, our real beauty lies within, highlighted in the staff care, the happiness and the academic success of those who already are part of the big Orchard County family.

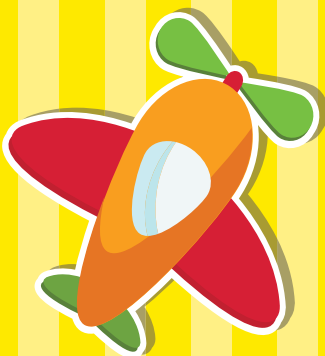
We look forward to being a special part of your child's development.

Yours faithfully

J. McMillan

J. McMillan PRINCIPAL







Orchard County Nursery

OUR VISION

Orchard County Nursery School will provide a caring, happy and safe environment, where each child will feel valued and be given the opportunity to reach their full potential.

We aim to promote positive attitudes, behaviour and relationships between school, home and the community.

To realise this ideal the following aims have been agreed by staff:

- To help children develop the knowledge, skills, attitudes and practical abilities they will need throughout their lives, at work and play, in a fast changing world.
- To help children develop lively, enquiring minds and an enthusiasm for learning.
- To help children develop the ability to persevere and have a pride in their work, both independently and with others.
- To help children develop values such as self-esteem, self-confidence, self-respect and an awareness of and a sensitivity to the needs of others.
- To help pupils develop qualities of feeling and imagination and an appreciation of the world around them.
- To help pupils develop Christian values and beliefs, to be aware of society and their place in it and respect the beliefs and opinions of others in our community

ABOUT US

Orchard County Nursery offers learning for children between the ages of three and four years.

The nursery unit opened in September 2012 and replaced the long-standing reception provision. It currently provides children with the perfect preparation for life in primary school.

The nursery is located in an eco-friendly building. The building comprises of a main classroom, a teacher's store, an office, a quiet area, infant toilets, a cleaner's store, a disabled toilet and a covered outdoor play area. The nursery children also have regular access to the main school facilities.

The staff consists of a **fully qualified teacher** with **specialist nursery training** and a nursery assistant. Additional classroom assistance may be provided for children with special educational needs. Being part of the primary school, we also use the services of the school secretary and the buildings supervisor.

The biggest benefit of having a nursery unit within any community is the fact that the children are taught a full and proper nursery curriculum by a **fully qualified teacher**. This curriculum includes activities specifically designed to ensure children are getting experiences that best prepare them for starting school.

A DAY IN THE LIFE OF ORCHARD COUNTY NURSERY

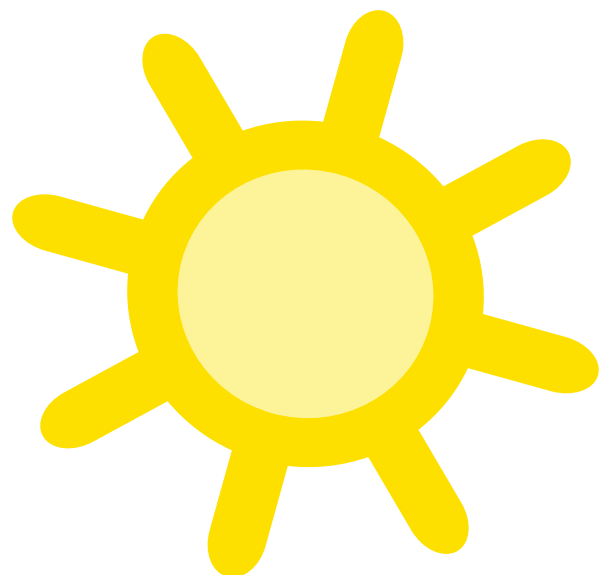
8.50 am	Nursery doors open
9:00 am	Class commences
9:00 am – 9:30 am	Story, music and discussion time
9:30 am – 10:15 am	Indoor play
10:15 am – 11:15 am	Indoor/Outdoor play
11.15 am – 11.20 am	Together Time
11.30am	Home time

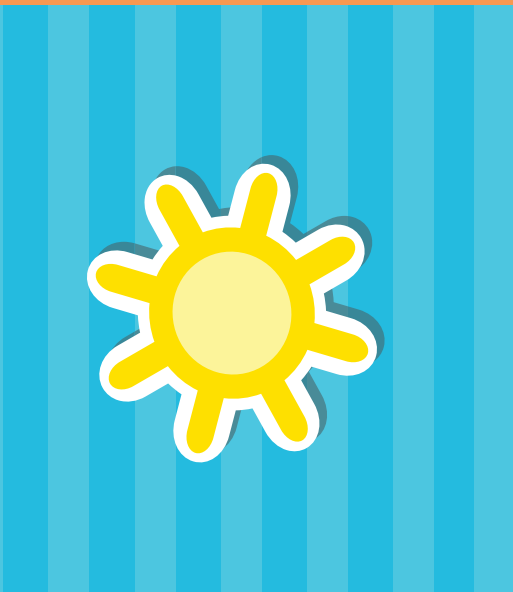
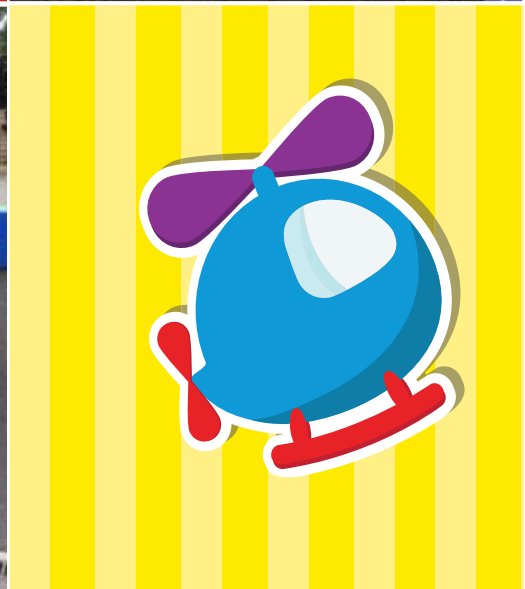
The nursery staff offer an after school nursery club if there is sufficient parental demand. This club is funded by parents.

During free play the staff will be working with children, supporting and extending their play. A snack table will be available where children may help themselves to milk or water from jugs and may choose from a selection of healthy snacks, e.g., fresh fruit, crackers, toast, variety of breads, yoghurt, cereals, sandwiches, etc. Staff may be involved in working with a small group of children at a planned task, e.g., craft activity, baking, etc. On occasions there may be an outing or a visitor may come to the school to talk to the children.

Parents/carers come into the classroom to collect their child and encourage their child to check their personalised drawer to remove work and any notes.

Arrival and collection times are flexible to ease congestion in the car park and foyer and to facilitate parent/teacher interaction if necessary. Please inform us if your child is being collected by someone new.







Orchard County Nursery

CURRICULUM

We provide an education appropriate to the needs of three and four year olds. It contributes to the personal, social and emotional experience of the children, their physical growth and to the aesthetic and intellectual development of each child. Nursery education is an opportunity to provide a stimulating yet secure environment in which children's individual differences and needs can be recognised and met, so that all aspects of their growth and development are promoted.

The Nursery Curriculum is composed of six areas of development:

Personal, Social and Emotional Development

This is crucial for young children in all aspects of their lives and gives them the best opportunity for success in all other areas of learning. Children are given the opportunity to settle smoothly into the nursery environment and to enjoy good relationships with adults and other children. They are encouraged to develop confidence, independence and self-discipline and enjoy the satisfaction of achievement. Children will be helped to develop social skills and respect for others and to play as part of a group. It is hoped they will show increasing perseverance and ability to concentrate on chosen activities, and an ability to make choices. Very importantly, children will have fun, as children who are not happy will not learn effectively.

Language Development

Increasing a child's competence in the use of language is an extremely important part of any programme for young children. The children are given opportunities to develop skills in speaking and listening in order to be able to process information, express their needs and interact with others. This underpins all learning through activities such as role play, storytelling, listening games, songs and rhymes. Nursery utilise WellComm speech and language programme.

As a preparation for reading we encourage an enjoyment of books and provide activities which will stimulate the children's skills in using books as a means of gathering information and sharing the pleasure that books afford. We also have a book borrowing system so that parents can share books with their children.

The children are also introduced to the idea of writing as a means of communication through using a variety of writing equipment and papers and recognising children's mark-making attempts.

Physical Development and Movement

Physical activity is important for enhancing the coordination and motor skills of young children and we play outside every day.

In our outdoor area there are opportunities for pedalling, climbing, sand play, balancing, ball play, construction, woodwork, gardening, imaginative play, music, weaving, drawing, etc. Children are also helped to develop skills such

as running, jumping, balancing etc. through sessions of Fundamental Movement Skills. We also hold a Sports Day on the MUGA.

The Arts

This includes art and design activities, music and movement, drama and role play. These activities are an avenue for self-expression and develop children's creativity, emotional development, social skills, and ability to experiment and solve problems.

We see art for young children as a pleasurable and fun experience which allows them to express themselves freely. Children have the opportunity to experiment with various materials and tools such as paints, pastels, chalk, card, papers, fabric, junk, clay, glue, tape, scissors, hole punches etc. For young children the process is more important than the product but we can also build children's confidence and self-esteem by appreciating their achievements and the beauty of their work.

Children have access to musical instruments and CDs and also learn songs as a class and perform at Christmas time for parents. We also have monthly sessions of Jo Jingles.

Children have access to a well-resourced house corner and dressing up clothes. Other role play centres are set up throughout the year in relation to the topic we are considering with props to stimulate children's play, such as the health centre, post office, vet, hairdressers, toy shop etc.

The World Around Us

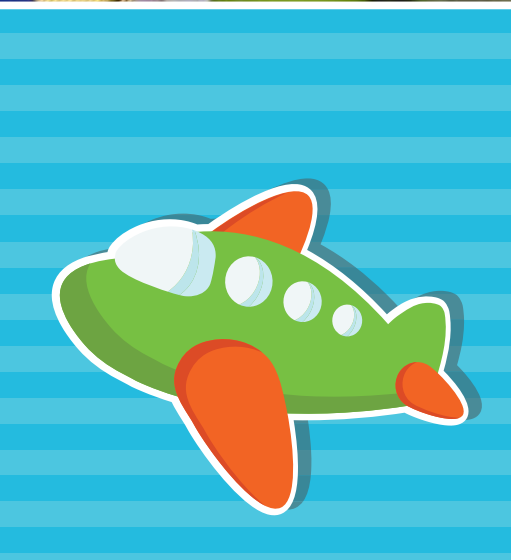
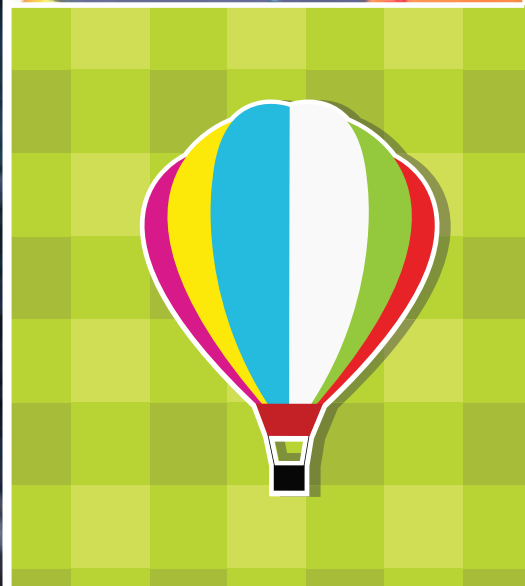
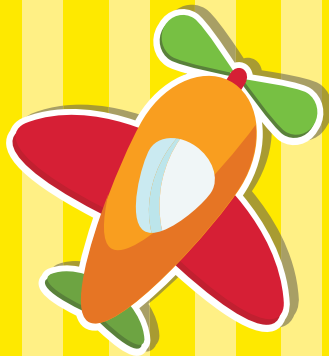
Children are naturally curious about their environment and the people around them and frequently ask questions. We aim to provide the children with an exciting, stimulating environment both indoors and outdoors with a wide variety of activities and experiences in play. Children are given opportunities to take part in activities including gardening, baking, and working with natural materials such as clay, sand, water and wood. We take trips to places of interest such as Peatlands Park, Tannaghmore Farm, Armagh Planetarium and W5. We also have visits from people who help us such as our community police officer, fire fighters, nurse and vet.

Early Mathematical Development

Early mathematical concepts are important in everyday life and develop slowly in the young child. We provide the children with opportunities to experience mathematical concepts such as size, shape, weight, number, pattern, sequencing, time etc. in many different contexts. These include activities such as sand and water play, construction, number songs and rhymes, puzzles, and in daily routines.

Shared Education

Orchard County Nursery Unit is involved in a Shared Education project with Apple Blossom Playgroup. This provides the pupils with curriculum-based contact between children and teachers from different backgrounds.





THE ROLE OF THE ADULT IN THE NURSERY

In nursery, the role of the adult is one of facilitator. Teachers and nursery assistants are constantly engaged in:

- **responding to children's comments, questions and requests**
- **talking with children, offering views, suggestions and observations**
- **sensitive and informed involvement and, when necessary, intervention in the play**
- **careful observation**
- **planning and preparing curriculum details – on the basis of observed interests, abilities and needs.**

The children's interest in and response to the curriculum are carefully and continuously observed by all staff. These observations are recorded, assessed and used by staff when determining future curriculum plans. In this way an attempt is made to match, as far as possible, the educational needs of all the children with the curriculum offered.

STARTING NURSERY

Starting school is a very important time for you, your child and the school. We all need to work together to make the transition smooth and problem free. We have a short phased entry system to ensure that children settle happily into their new surroundings. We invite parents to stay with their child during the Induction session. All children will then stay for the full Nursery day in September unless a prolonged settling in period is required.

ARRANGEMENTS FOR CHILDREN WITH SPECIAL EDUCATIONAL NEEDS

Children with special educational needs are integrated into the school as far as possible. Every effort is made to establish as clearly as possible the special individual needs of each child and respond to them. The staff will liaise and cooperate with any other professionals who may be involved with the child such as educational psychologists, speech therapists, community paediatricians etc. as it is felt that a multi-disciplinary approach is necessary if special needs are to be addressed effectively. An additional classroom assistant may be employed to help with any statemented children at the discretion of the education authority.

PASTORAL CARE ARRANGEMENTS

Pastoral care is viewed as the creation of an atmosphere where children, parents and staff feel secure, respected and valued.

It is our policy to treat all children and their families with respect and consideration at all times. We seek to ensure that parents feel welcome, that their contribution to their children's education is recognised and valued, that they feel confident to approach the staff, and that they respect the position and role of each staff member. While we speak to parents informally throughout the year regarding their child's progress, we also invite parents to attend parent-teacher meetings each term in the autumn and spring terms.

For the children, the pastoral dimension permeates every aspect of the curriculum. Staff continuously strive to provide a caring, supportive and safe environment, in which all our children can learn and develop to their full potential.

SAFEGUARDING/ CHILD PROTECTION POLICY

We have in place a safeguarding policy to provide procedures and safeguards to ensure that we are providing a safe and secure environment for all children and staff.

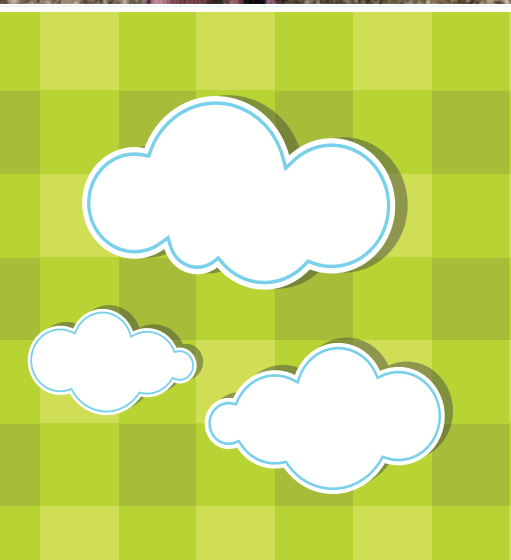
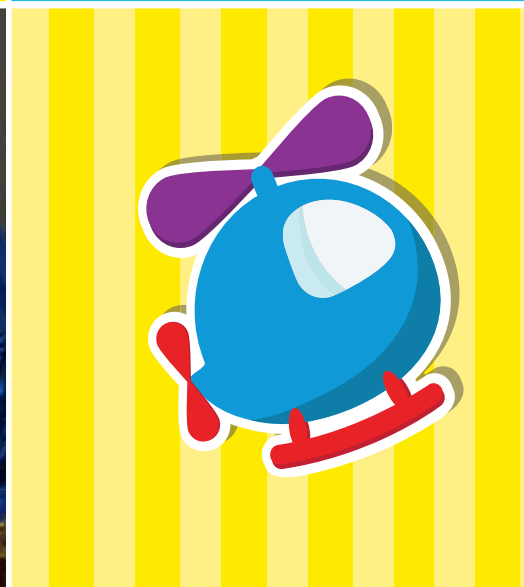
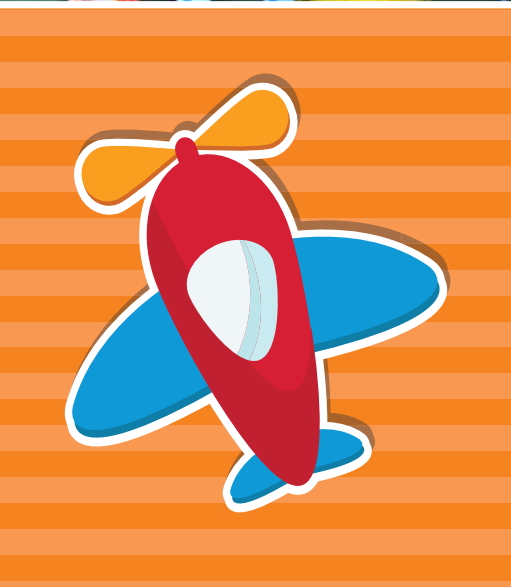
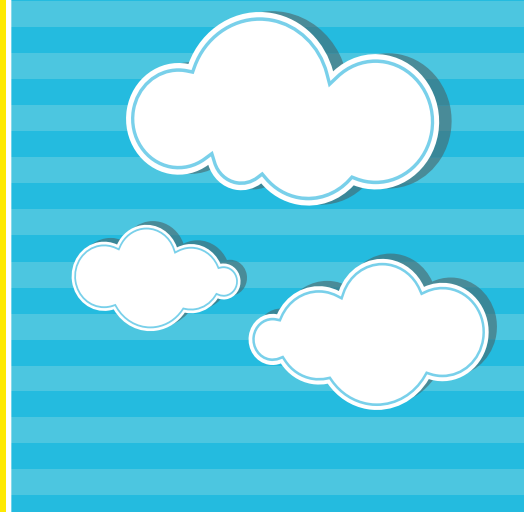
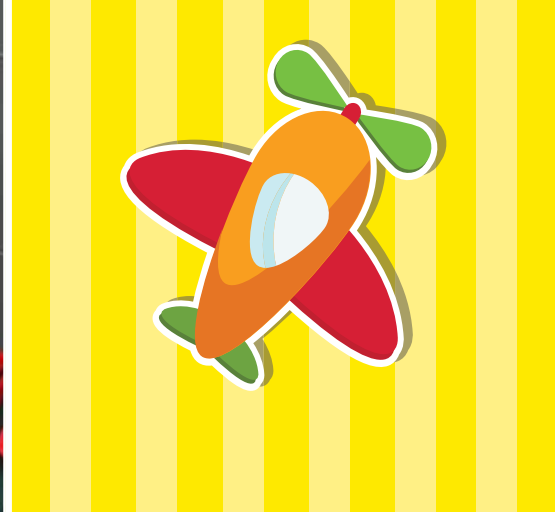
NURSERY DISCIPLINE

Good discipline creates a secure environment within which children can experience effective and enjoyable learning. The policy of the school is to reinforce positive attitudes and encourage self-discipline, self-esteem and respect for other people and for property. If we experience on-going problems with a child's behaviour we consult with parents on how this might best be managed. We have various behaviour management strategies in place and we call on the support of the education authority if necessary.

MAINTAINING STANDARDS

Our school is known for achieving excellence using modern approaches combined with traditional standards and here in our nursery we aim to do exactly the same. The Board of Governors thoroughly believes that academic excellence can only be achieved in a setting where the standards synonymous with our founder schools are maintained.

In applying for a place in Orchard County Nursery, our Governors assume that you, as a parent/guardian, recognise and will support the staff in maintaining the standards outlined within this prospectus. They are based upon safety and mutual respect for the needs and aspirations of all within the school.





Orchard County Nursery

JEWELLERY

As the safety of your child is our main concern we would discourage pupils from wearing any jewellery to nursery.

HAIRSTYLES

In the interest of the health and safety, we request that hair is not coloured and girls' long hair is tied in a pony tail using a scrunchie in school colours (available from local retailers). Plain navy or red elasticised hair bands may also be worn. Our vision for Orchard County pupils is that, right from the nursery, they acquire a sense of pride in their school. To do this, it is expected that pupils maintain a neat appearance when in the public domain wearing the school uniform. Therefore extreme or attention-seeking hairstyles (such as shaved lines or Mohawks) are not permitted.

CHARGING AND REMISSIONS POLICY

Nursery education is free to all children. However, we ask for a monthly contribution towards snack food, play equipment, library books, school trips and visitors such as Jo Jingles, etc. Our nursery after school club is funded by parents.

NURSERY UNIFORM

School Uniform (Available from Robert Davidson's and Jameson's Shops in Portadown)

Navy (nursery logo) sweatshirt

Matching Navy (jogging style) trousers

Red (nursery logo) polo shirt

Velcro-strap footwear

A warm waterproof coat

It is important that children wear comfortable, easily managed clothing to help develop their independence.

As is usual practice, on an occasion where your child is unable to come to school wearing his/her uniform, please inform the teacher by letter or email. We sincerely thank you in advance for your support in maintaining these standards.

We hope you have found the contents of the Prospectus useful and informative. If you would like to call into the school and take a look around, we will be more than pleased to meet you and answer any further questions you may have. Please contact the Principal to make an appointment.

NURSERY STAFF

Nursery Teacher: Mrs. J. Kaestner

Nursery Assistant: Mrs. L. McMahon

THE SCHOOL WEBSITE

www.orchardcountyps.co.uk

We have an excellent website aimed at providing regular information for parents about life here in Orchard County Primary School and Nursery.

It includes key information for parents relating to school policies and procedures. It also includes a weekly diary to ensure no-one forgets any of the special activities going on.

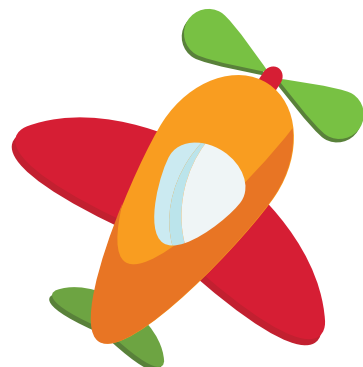
The website also contains a school tour, an introduction to the staff and details of the school curriculum.

Most importantly the website contains a page for each class and a gallery which is filled with brilliant images showing all the wonderful things we get up to here in Orchard County. We also have a home learning section for parents and the nursery teacher will post tasks and information here.

Please take a few moments to log on and have a browse. With just a few clicks, you will get a really good feel for the school, the staff and all we try to achieve for the pupils.

AND FINALLY....

Thank you for taking the time to learn more about Orchard County Nursery. This document is accurate at the time of going to press. However, any changes to the information contained will be notified to parents as and when they occur. We look forward to welcoming your child and family to Orchard County Nursery Unit.



VISITING THE NURSERY

